

## SharpView Premier - CCTV security for Shops, Restaurants, Pubs and Clubs, small Offices, Schools and Bank branches



### SharpView Premier SVR-110NT

- ▶ World's fastest network video recording engine
- ▶ Records megapixel and HD cameras
- ▶ Records analogue\* and IP cameras
- ▶ M-JPEG, MPEG4, H.264, JPEG2000
- ▶ Enterprise class Linux OS
- ▶ Industrial grade Tower server
- ▶ Outstanding thermal properties
- ▶ 8TB storage available
- ▶ Scalable recording of unlimited number of cameras to as many required units from multiple sites

SharpView Premier is the ideal solution for small to medium sized CCTV applications where the highest performance, reliability and flexible storage options are required.

SharpView Premier consists of **SVR-110NT** and **SharpView Manager Professional** combining the world's most powerful video recording engine with EyeLynx's video security management software.

The system is scalable for unlimited numbers of recorders, IP cameras and any security device that requires integration with the CCTV system. Alarms, Intercoms, door entry systems can all be managed using SharpView Manager Professional VMS.

### SharpView Manager Professional



- ▶ Security Management System
- ▶ Unique megapixel digital-PTZ
- ▶ Integrate security systems with plug-ins:
  - Alarms
  - Site-Map
  - Intercoms
  - Action on Event
  - Macros
- ▶ Simultaneous live view, download, export to DVD
- ▶ Cross platform: Linux, Windows, Apple Mac OS X

SharpView Premier is supplied with **16 inputs** enabled, up to **8,000GB storage**, **SharpView Manager Professional VMS**.

Utilising the latest Enterprise class Linux operating system, EyeLynx's SharpView recording engine exhibits the fastest storage and retrieval performance in the industry.

**SVR-110NT** records digital video for all compression formats including; **H.264, MPEG4, M-JPEG, and JPEG2000** from most standard IP, megapixel and HD CCTV cameras. Video from **Arecont, Axis, Hikvision, IQEye, JVC, Lumenera, Panasonic, Pelco, Samsung, Sanyo, Sony, UDP, X-Vision**, any HTTP or RTSP stream can be recorded.

\* Record analogue cameras via IVE (see below)

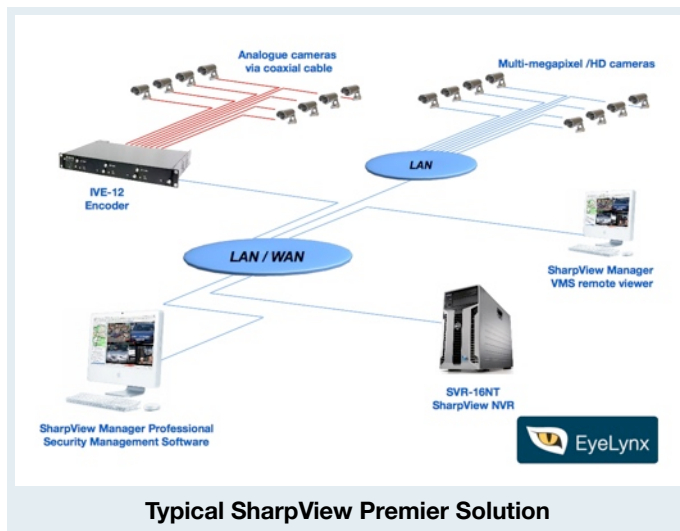
Configure using any web browser including hand held devices connected to the unit. All system parameters can be set or changed over SSL connection and vital system information can be accessed in the same way. Video recording parameters are set up via web-browser; frame rate, resolution, motion detection, storage times and schedules can be set.

Sources can be a mixture of PAL/NTSC, IP including High Definition and megapixel cameras. Resolution can be selected by the users; **CIF, VGA, 4CIF, D1, 720p, 1080p, 2048 x 1536, 2560 x 1920** through to **4008 x 2672**. Recording frame rates can be set to any rate supported by the cameras. Analogue cameras can be recorded using industry standard encoders. Maximum recording rate for SVR-110NT is 100Mbps or 480 fps equivalent to 16 full HD1080p cameras each running at 30 fps.

**8,000GB** of internal storage is available. The chassis features thermal certification of Intel Dual core and Quad core CEB compliance and exhibits excellent thermal performance.

**Example capability - recording all cameras simultaneously:**

- 6 x PAL cameras encoded MPEG4, D1, 25 fps
- 3 x JVC VN-H257U, H.264, 1080p, 30fps
- 3 x Panasonic SC385, H.264, 720p, 15fps
- 2 x Arecont AV5100M, M-JPEG, 2592 x 1944, 5fps
- 1 x Lumenera 11059c M-JPEG, 4008 x 2672, 2fps



As with all EyeLynx products, the SVR-110NT is industrial grade, built to a robust standard without compromise in any of the material used. This coupled with the operating software provides a product of unsurpassed quality, reliability and performance.

**TECHNICAL SPECIFICATIONS SVR-110NT**

Operating System	Linux (Enterprise class)
Inputs	16 inputs of any resolution
Supported devices	Arecont Vision, Axis, Hikvision, IQEye, JVC, Lumenera, Panasonic, Pelco, Samsung, Sanyo, Sony, UDP, X-Vision, HTTP, RTSP cameras and encoders
Video Storage Capacity	Supports 4 x 3.5" hard disks, up to 8,000GB storage
Storage Configuration	Hard disk controller allows fault tolerant RAID 0, 1, 5, 6 configurations
Recording rate	Maximum: 100Mbps or 480fps (any resolution)
Interfaces	1000 Mbps (Gigabit) Ethernet 4 x USB 2.0, 1 x RS-232/485
Power Supply	Internal 305W or optional 650W dual redundant 1+1*
System Monitoring	LED for Power ON, HDD activity, network activity. System includes SMART monitoring
Front Panel Controls	Power ON/OFF
Operating Temp. Range	0 to 50 degrees
Dimensions (D x W x H)	425 mm x 190 mm x 420 mm
Weight	10 Kg (approx excluding HDD)
Chassis material	Steel 1.2mm SGCC, ABS-HB
<b>* Special configuration - Specify at time of ordering</b>	

## Intelligent Video Encoders IVE-XX

**Intelligent Video Encoders** are available as single channel, quad channel module or rack mount version with 4-channel blade cards.

Using **IVE-XX** encoders is the easiest way to migrate an analogue system with existing PAL/NTSC cameras to SharpView digital IP CCTV platform. **IVE-XX** encoders convert the analogue signal to digital M-JPEG, MPEG4 or H.264 compression with D1 resolution and full frame rates 25/30 fps PAL/NTSC on all channels. **IVE-XX** encoders include 4/4 digital I/O and RS-232, RS-485 for every 4-channel module or blade card. PTZ protocols for all major manufacturers is supported. are provided. Refer to datasheets for detailed specifications.



**Abandoned object in car park**



**Intruder alert at perimeter fence**

**IVE-04; 4 channel encoder**



**IVE-12; 12 channel rack mountable encoder**



**IVE-40; 40 channel rack mountable encoder**

### Video Content Analytics

Video intelligence or 'video content analytics' is carried out by the powerful and intuitive tracking engine built into each IVE-XX. This video analytics software algorithm provides alerts for any scene changes meeting the users pre-defined conditions, providing a highly reliable, high performance capability that results in the lowest false alarm rates and maintains ease of use for operator control.

### Video Intelligence - Premium

High Performance	Lowest false alarm rate algorithm
Ease of use	Intuitive configuration and set-up
Detection Zones	Multi-segment polygon and lines
On-Screen display	Real-Time display of tracking / events

### Video Intelligence - Professional (optional)

Detection Behaviour	Direction, stopping, loitering, left object, removed object
3D Behaviour	Perspective corrected filters for size and speed
Statistics	Counting functions
Image Stabilisation	Removes camera shake
Tracking	Auto PTZ tracking



## SharpView Manager Professional

Feature rich security management software that allows users to manage their CCTV with complete integration of other security devices. Access Control, Fire Alarms, Motion sensors and Intercoms can all be managed alongside CCTV and more importantly linked to each other using the Connections module that allows local on-site customisation via simple macro scripting. Security personnel can be alerted to specific events and have confidence in their system to carry out automated responses to alarms. The user interface is configurable and all feature modules (plug-ins) can be repositioned or undocked for multiple screens.

Unlimited number of users can use SharpView Manager on Windows or Apple Mac OS X.

### Video View

Displays cameras with play controls in either 1, 4, 9, 16, 25 or 36-way screen split options. Monitor feature provides extra Video View for up to a total of 72-ways. Save images (snapshot) as jpeg, instant print, digital PTZ with preview window, create virtual cameras, mark incidents with Tags for instant access and review.

Play controls include slow-motion, x2048 fast forward and rewind speeds, pause and an interactive timeline marker bar which represents recorded video. Recordings can also be accessed by simple date and time entry for either a selected camera or all cameras in a multi-way.

### Device Manager

Allows users to see all IP cameras, NVRs, DVRs, and workstations on the system either by classic tree view or by location groups. PTZ control for supported cameras is provided by use of the mouse or via USB joystick.

### Back-Up Manager

Video clips can be downloaded from the recorder to the local hard disk or to any storage device on the network in the original video format. Downloaded clips can be further exported into .avi or .mov. Previously downloaded clips can be mounted and viewed alongside the live video.

### Mapping

Cameras can be represented on an interactive map of the premises. Positions of alarms, access control points, intercoms and motion sensors can be marked out on the map.

The relative PTZ position of each sensor can be preset in the camera or DVR and linked to the device manager so that by simply clicking on a particular part of the map, the associated camera will reposition to that preset coordinate.

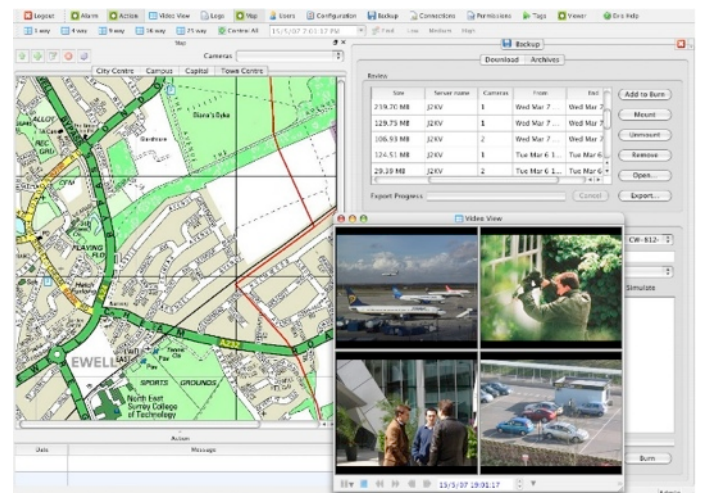
### Alarm Manager

Alarm Manager 'listens' and logs events by time, date, reference and allows specific actions to follow after an alarm. Alarms could be video intelligence alerts, motion detection from cameras or PIR motion sensors, fire detectors, door entry systems or even monitors from other electronic devices on the network.

### Connections

This module allows the user to create specific responses to triggers received by the system via simple scripting or by use of the wizard. This powerful module enables the user to design the security based on 'action on event' specified criteria.

An action could be to start a macro that sends an e-mail alert, plays a sound file and transmits an image to a security guard's workstation following the triggering of an intruder alarm. All plug-in modules are scriptable within Connections, thereby the user is able to link and control any devices that are connected to the system.



Typical Screen showing Video View, Back-Up, Mapping

### Data Logs

This plug-in logs events from any plug-in or device driver in the system so the administrator can export the data for future analysis.

### Users Profile

This module defines the users' access rights. The administrator can control which plug-in modules the user can and cannot access.

### Permissions

Permissions allows the user to specify at the plug-in level which functions in the plug-in a user profile can execute.

**Distributed by:**

**EyeLynx Limited**  
Trident Court  
One Oakcroft Road  
Chessington  
Surrey  
KT9 1RH, UK  
[www.eyelynx.com](http://www.eyelynx.com)

