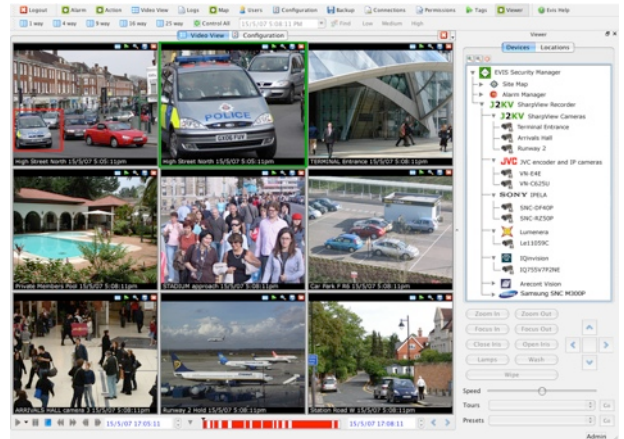


## SharpView Corporate - CCTV security for large sites, Stadiums, Colleges, Offices, Airports, Shopping Malls, City Centres



### SharpView Corporate SVR-510NI

- ▶ World's fastest network video recorder
- ▶ Records megapixel and HD cameras
- ▶ Records analogue\* and IP cameras
- ▶ M-JPEG, MPEG4, H.264, JPEG2000
- ▶ Enterprise class Linux OS
- ▶ Industrial grade 19" rack mount
- ▶ Outstanding thermal properties
- ▶ 36TB storage available
- ▶ Scalable recording unlimited number of cameras from multiple sites

SharpView Corporate is the ideal solution for large scale infrastructure CCTV applications where the highest performance, reliability and flexible mass storage options are required.

SharpView Corporate consists of **SVR-510NI** and **SharpView Manager Professional** combining the world's most powerful network video recorder with SharpView Manager Professional, EyeLynx's video security management software.

The system is scalable for unlimited numbers of IP cameras, recorders and any security device that requires integration with the CCTV system. Alarms, Intercoms, door entry systems can all be managed using SharpView Manager Professional software.

### SharpView Manager Professional



- ▶ Security Management System
- ▶ Unique megapixel digital-PTZ
- ▶ Integrate security systems with plug-ins:
  - Alarms
  - Site-Map
  - Intercoms
  - Action on Event
  - Macros
- ▶ Simultaneous live view, download, export to DVD
- ▶ Cross platform: Linux, Windows, Apple Mac OS X

SharpView Corporate is supplied with **64 inputs** enabled and up to **36,000GB storage** (R12 model).

Utilising the latest Enterprise class Linux operating system, EyeLynx's SharpView recording engine exhibits the fastest storage and retrieval performance in the world.

**SVR-510NI** records digital video for all compression formats including; **H.264, MPEG4, M-JPEG, and JPEG2000** from most standard IP, megapixel and HD CCTV cameras.

Video from **Arecont, Axis, Hikvision, IQEye, JVC, Lumenera, Panasonic, Pelco, Samsung, Sanyo, Sony, UDP, X-Vision**, any HTTP or RTSP stream can be recorded.

\* Record analogue cameras via IVE (see below)

Configure using any web browser including hand held devices connected to the unit. All system parameters can be set or changed over SSL connection and vital system information can be accessed in the same way. Video recording parameters are set up via web-browser; frame rate, resolution, motion detection, storage times and schedules can be set.

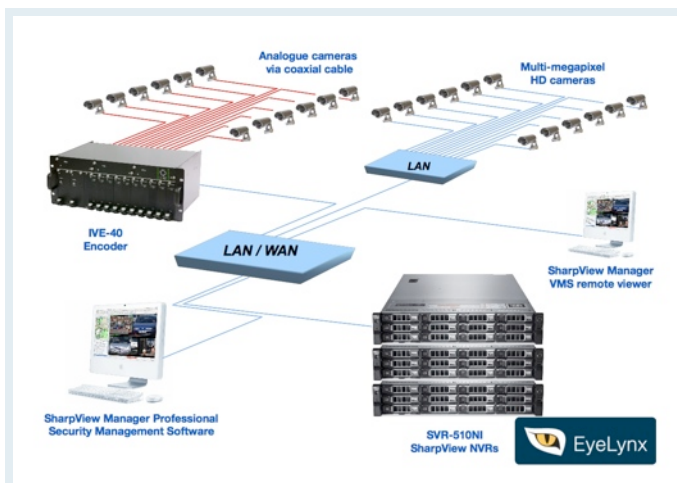
Sources can be a mixture of PAL/NTSC, IP including High Definition and megapixel cameras. Resolution can be selected by the users; **CIF, VGA, 4CIF, D1, 720p, 1080p, 2048 x 1536, 2560 x 1920** through to **4008 x 2672**. Recording frame rates can be set to any rate supported by the cameras. Analogue cameras can be recorded using industry standard encoders. Maximum recording rate for SVR-510NI is **320Mbps** or equivalent to **64 full HD1080p** cameras each running at 25fps.

**36,000GB** of storage is available in R12 model.

**24,000GB** of storage is available in R8 standard build.. The chassis features thermal certification of Intel Dual core and Quad core CEB compliance and exhibits excellent thermal performance.

**Example capability - recording all cameras simultaneously:**

- 16 x PAL cameras encoded MPEG4, D1, 25 fps
- 10 x JVC VN-H257U, H.264, 1080p, 30fps
- 10 x Panasonic SC385, H.264, 720p, 15fps
- 10 x Arecont AV5100M, M-JPEG, 2592 x 1944, 5fps
- 5 x Lumenera 11059c M-JPEG, 4008 x 2672, 2fps



**Typical SharpView Corporate system configuration**

As with all EyeLynx Video products, the SVR-510NI is industrial grade, built to a robust standard without compromise in any of the material used. This coupled with the operating software provides a product of unsurpassed quality, reliability and performance.

**TECHNICAL SPECIFICATIONS: SVR-510NI**

Operating System	Linux (Enterprise class)
Inputs	64 inputs of any resolution
Supported devices	Arecont Vision, Axis, Hikvision, IQEye, JVC, Lumenera, Panasonic, Pelco, Samsung, Sanyo, Sony, UDP, X-Vision, HTTP, RTSP cameras and encoders
Video Storage Capacity	R8 model supports 8 x 3.5" hard disks, up to 24,000GB R12 model supports 12 x 3.5" hard disks, up to 36,000GB
Storage Configuration	Standard 8-port RAID, optional 12-port * RAID controller allows fault tolerant configurations of RAID levels 0,1, 3, 5, 6 and 10
Recording rate	Maximum: 320Mbps or 1,600 fps (any resolution)
Interfaces	Dual 1000 Mbps (Gigabit) Ethernet 4 x USB 2.0, 1 x RS-232/485
Power Supply	Internal 600W or optional 650W dual redundant 1+1*
System Monitoring	Either LED or LCD panel for Power ON, HDD activity, Network activity. System includes SMART monitoring
Front Panel Controls	Power ON/OFF
Operating Temp. Range	0 to 50 degrees
Dimensions (D x W x H)	660 mm x 430 mm x 88 mm
Weight	16 kg (approximate exc HDD)
Chassis material	Steel 1.2mm SGCC, ABS-HB
<b>* Special configuration - Specify at time of ordering</b>	

## Intelligent Video Encoders IVE-XX

**Intelligent Video Encoders** are available as single channel, quad channel module or rack mount version with 4-channel blade cards.

Using **IVE-XX** encoders is the easiest way to migrate an analogue system with existing PAL/NTSC cameras to SharpView digital IP CCTV platform. **IVE-XX** encoders convert the analogue signal to digital M-JPEG, MPEG4 or H.264 compression with D1 resolution and full frame rates 25/30 fps PAL/NTSC on all channels. **IVE-XX** encoders include 4/4 digital I/O and RS-232, RS-485 for every 4-channel module or blade card. PTZ protocols for all major manufacturers is supported. are provided. Refer to datasheets for detailed specifications.



**Abandoned object in car park**



**Intruder alert at perimeter fence**



**IVE-04; 4 channel encoder**



**IVE-12; 12 channel rack mountable encoder**



**IVE-40; 40 channel rack mountable encoder**

### Video Analytics

Video intelligence is carried out by the powerful and intuitive tracking engine built into each **IVE-XX**. This video analytics software algorithm provides alerts for any scene changes meeting the users pre-defined conditions, providing a highly reliable, high performance capability that results in the lowest false alarm rates and maintains ease of use for operator control.

#### Video Intelligence - Premium

High Performance	Lowest false alarm rate algorithm
Ease of use	Intuitive configuration and set-up
Detection Zones	Multi-segment polygon and lines
On-Screen display	Real-Time display of tracking / events

#### Video Intelligence - Professional (optional)

Detection Behaviour	Direction, stopping, loitering, left object, removed object
3D Behaviour	Perspective corrected filters for size and speed
Statistics	Counting functions
Image Stabilisation	Removes camera shake
Tracking	Auto PTZ tracking





## SharpView Manager Professional

Feature rich security management software that allows users to manage their CCTV with complete integration of IP devices on the network. SharpView Manager is available for Win XP, Vista, Windows7 or Apple Mac OS X.

Access Control, Fire Alarms, Motion sensors and Intercoms can all be managed alongside CCTV and more importantly linked to each other using the Connections module that allows local on-site customisation via simple macro scripting. Security personnel can be alerted to specific events and have confidence in their system to carry out automated responses to alarms. The user interface is configurable and all feature modules (plug-ins) can be repositioned or undocked for multiple screens. Unlimited number of users can use SharpView Manager.

### Video View

Displays cameras with play controls in either 1, 4, 9, 16, 25 or 36-way screen split options. Monitor feature provides extra Video View for up to a total of 72-ways. Save images (snapshot) as jpeg, instant print, digital PTZ with preview window, create virtual cameras, mark incidents with Tags for instant access and review.

Play controls include slow-motion, x2048 fast forward and rewind speeds, pause and an interactive timeline marker bar which represents recorded video. Recordings can also be accessed by simple date and time entry for either a selected camera or all cameras in a multi-way.

### Device Manager

Allows users to see all IP cameras, NVRs, DVRs, and workstations on the system either by classic tree view or by location groups. PTZ control for supported cameras is provided by use of the mouse or via USB joystick.

### Back-Up Manager

Video clips can be downloaded from the recorder to the local hard disk or to any storage device on the network in the original video format. Downloaded clips can be further exported into .avi or .mov. Previously downloaded clips can be mounted and viewed alongside the live video.

### Mapping

Cameras can be represented on an interactive map of the premises. Positions of alarms, access control points, intercoms and motion sensors can be marked out on the map.

The relative PTZ position of each sensor can be preset in the camera or DVR and linked to the device manager so that by simply clicking on a particular part of the map, the associated camera will reposition to that preset coordinate.

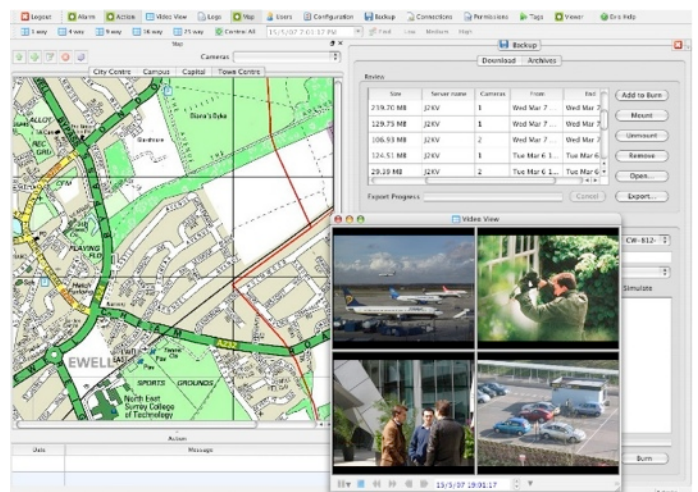
### Alarm Manager

Alarm Manager 'listens' and logs events by time, date, reference and allows specific actions to follow after an alarm. Alarms could be video intelligence alerts, motion detection from cameras or PIR motion sensors, fire detectors, door entry systems or even monitors from other electronic devices on the network.

### Connections

This module allows the user to create specific responses to triggers received by the system via simple scripting or by use of the wizard. This powerful module enables the user to design the security based on 'action on event' specified criteria.

An action could be to start a macro that sends an e-mail alert, plays a sound file and transmits an image to a security guard's workstation following the triggering of an intruder alarm. All plug-in modules are scriptable within Connections, thereby the user is able to link and control any devices that are connected to the system.



Typical Screen showing Video View, Back-Up, Mapping

### Data Logs

This plug-in logs events from any plug-in or device driver in the system so the administrator can export the data for future analysis.

### Users Profile

This module defines the users' access rights. The administrator can control which plug-in modules the user can and cannot access.

### Permissions

Permissions allows the user to specify at the plug-in level which functions in the plug-in a user profile can execute.

**Distributed by:**

**EyeLynx Limited**  
Trident Court  
One Oakcroft Road  
Chessington  
Surrey  
KT9 1RH, UK  
[www.eyelynx.com](http://www.eyelynx.com)

